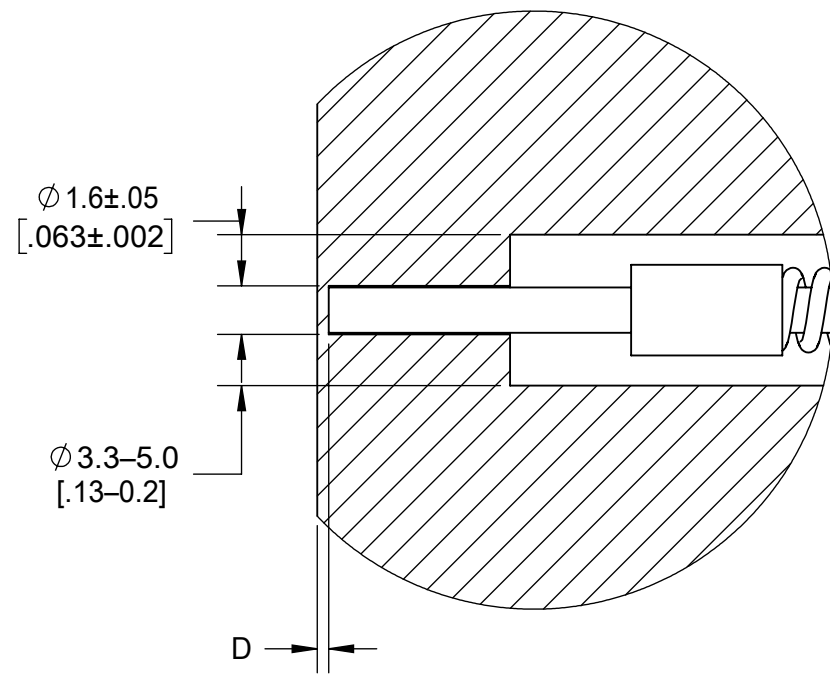
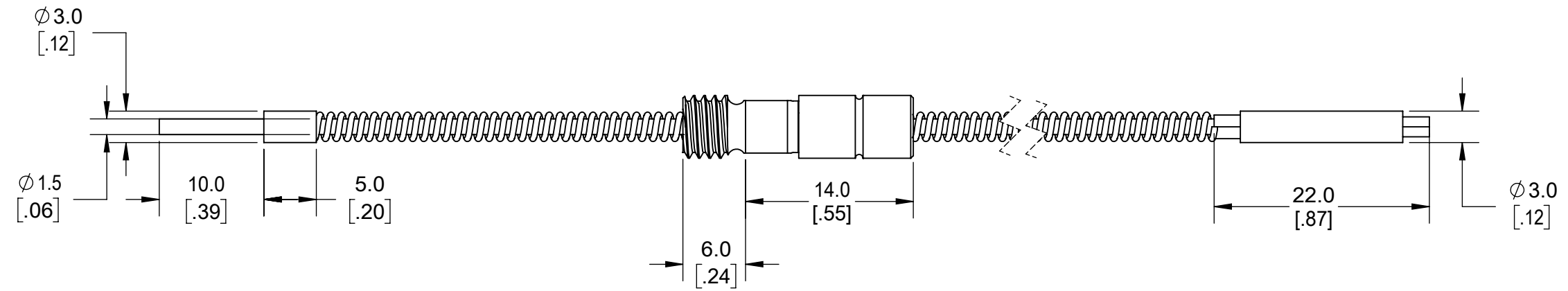
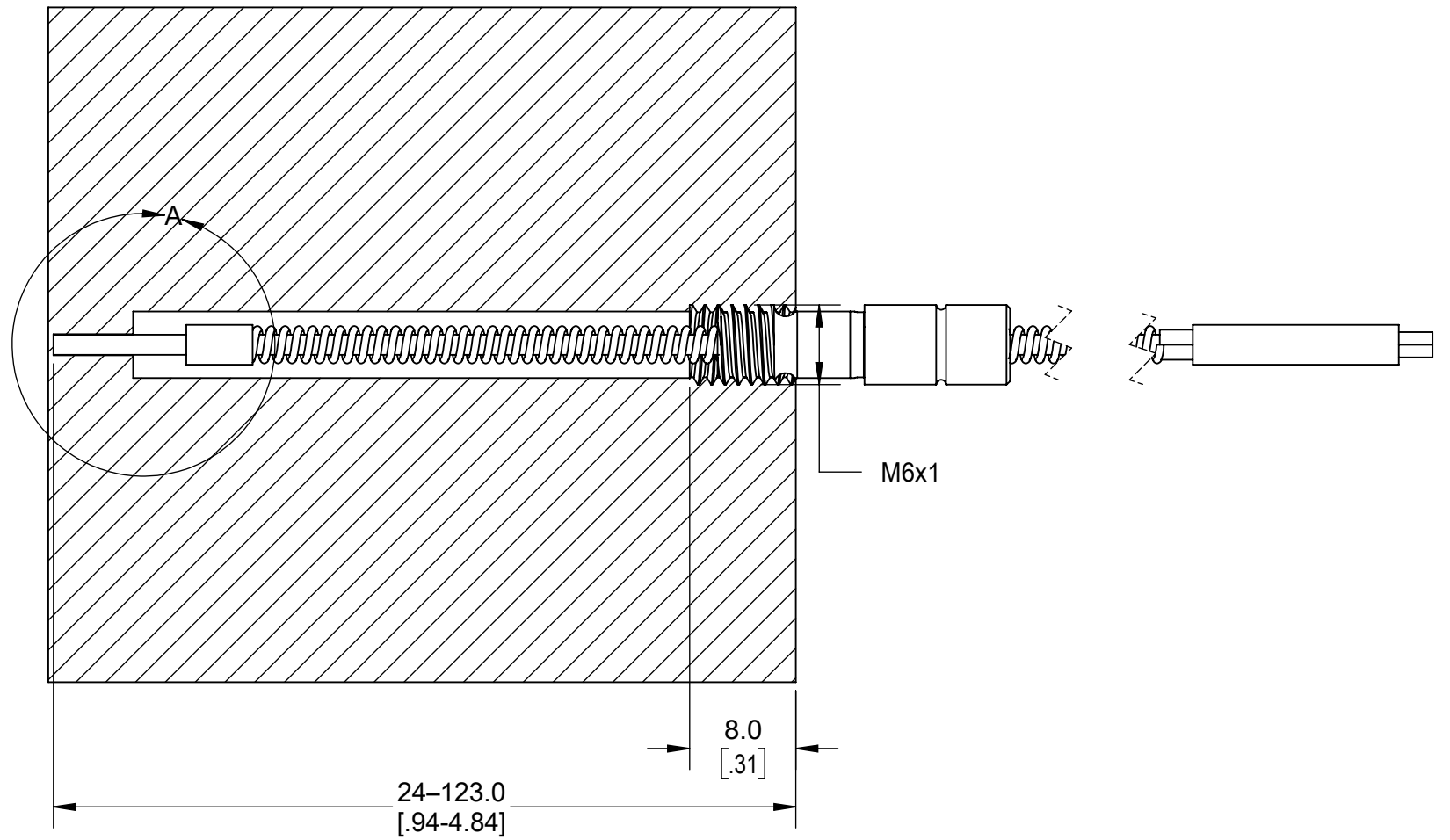


Drawing Title: TS-SL01.5-K Installation



DETAIL A
SCALE 4 : 1



Application Depth (D)	
Flow Front Arrival and Effective Melt Temperature	D < .38 [.02]
Mold Temperature	D > .38 [.02]

NOTES:

1. CLAMP PLATE APPLICATIONS REQUIRE GUIDED EJECTION
2. EJECTOR AND TRANSFER PIN CONCENTRICITY MUST BE WITHIN 0.030" [0.76] OR 10% OF EJECTOR PIN DIA, WHICHEVER IS SMALLER.
3. ENCLOSED EJECTOR BOX SUGGESTED.
4. DO NOT SCALE PRINT
5. BREAK ALL SHARP EDGES, 0.005 [0.03] R MAX
6. DIMENSIONS IN INCHES [MM], UNLESS NOTED
7. TOLERANCES UNLESS SPECIFIED:
 XXX = ±0.003 [0.08]
 XX = ±0.01 [0.3]
 ANGLES = ±3° 30°

 3111 Park Street, Traverse City, MI 49686 231-944-2111 www.rjg.com	Description: TS-SL01.5-K Sensor Installation
	Drawn: K.J.Brettschneider
	Design: M.Groleau
	Date: 11.21.2022